

Friday 15th January 2021

L.O: To recognize and challenge stereotypes

Welcome to your second week of RSE!

You don't need to write anything down for this lesson but work through the activities and reflect on your ideas.

If you can, have a discussion with an adult or sibling at home 😊

Activity 1

Work through this quickly, going with your first instinct.

Describe the person that you imagine when I say...

Nurse

Beautician

Electrician

Footballer

Activity 1

- Nurse – Did you imagine a woman? Was she young or old? Can't a man be a nurse? Do you have to be young to do this job?

- Electrician – Did you imagine a man? Can't a woman be an electrician? Do you have to be young to do this job?

- Beautician – Did you imagine a woman? Was she young or old? Can't a man be a beautician? Do you have to be young to do this job?

- Footballer – Did you imagine a man? Can't a woman be a professional footballer too? Do you have to be young to play football?

Builder



Nurse



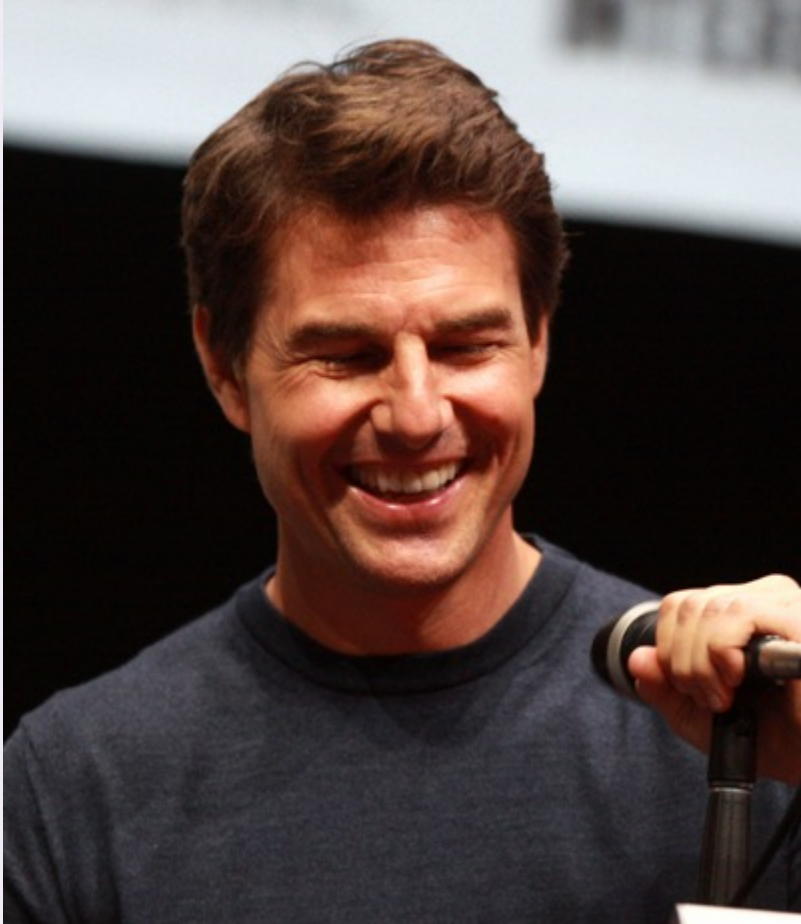
Photo courtesy of CDC Global Health (@flickr.com) - granted under creative commons licence – attribution

Spy

Before she was a famous chef and TV personality, Julia Child was a top secret researcher for the Office of Strategic Services (OSS), known today as the CIA. She was too tall to enlist in the Women's Army Corps during Second World War, so joined the spy network created by President Franklin Roosevelt.



Learning Difficulty



Tom Cruise is one of the most recognised faces in Hollywood but he is also dyslexic.

Photo courtesy of Gage Skidmore (@flickr.com) - granted under creative commons licence – attribution

Activity 2

Work through this quickly, going with your first instinct.

I answered these questions about my friend, Frankie. Can you picture them?

- Which school clubs does Frankie attend?

Frankie loves going to rugby club and craft club.



- What might Frankie like to do as a job?

Frankie wants to join the army.



- Does Frankie have any pets?

Frankie has a pet rat, called Roland.



Activity 2

Challenging Stereotypes

We shouldn't assume that Frankie is a boy, or a girl solely based on name, interests, career choice or pets!



Activity 3

Read the following scenarios and discuss your thoughts.

Scenario 1 – Jamie is a wheelchair user who loves sports. His neighbour asked him, ‘Which sport do you like watching best?’

Jamie replied, ‘Who says I just watch?’

Scenario 2 – Year 6 pupils Fiona and Imogen are friends. Imogen asks Fiona, ‘What do you think your life will be like when you’re 30?’

‘I hope to be working as a vet because that’s my dream job,’ replied Fiona.

‘Really?’, exclaimed Imogen. ‘Don’t you want to be married and stay at home while your husband goes to work and earns all the money? That’s what men are supposed to do, right?’

Activity 4

Read the following description and discuss the type of person you pictured.



This person makes me my breakfast every morning then takes me and my older brother to school. While I'm at school, they are at home looking after my baby brother and doing all the housework. They pick me up from school, help me with my homework and make me tea.

Activity 4

Did you picture this person as a woman?



We shouldn't assume that it is only women that stay at home looking after the family. Men do this just as well.

Stereotyping

We all have ideas and images that pop into our heads when we are asked to think about something.

Stereotyping is when people think that everyone who belongs to a specific group is the same. Some examples of stereotyping:

- All professional footballers are men.
- All make-up artists are women.
- All models are young.
- Girls don't like to play in the mud.
- All teenagers who wear hoodies are troublemakers.

Activity 5

Who would you like to spend the evening with?

Look at the characters on the next slide and choose two guests that you would like to have dinner with.

Think about what their personality traits might be, their likes and dislikes etc.

Card A

A professional bee keeper.

Card B

An active member of The Church
of Jesus Christ of Latter-day
Saints.

Card C

An amputee.

Card D

The son of a farmer.

Card E

An infant of mixed heritage, adopted at
just a few weeks old.

Card F

A mountaineer, explorer and
philanthropist.

Card G

A New Zealand rugby union player.

Card H

An elite athlete with a string of
Olympic gold and silver medals.

Card I

A pioneer of physics.

Card J

A professional soprano opera singer.

Who's Who?

Characters A and F

They are actually the same person!

Sir Edmund Hilary was a mountaineer and explorer who was the first man (along with his friend Tenzing Norgay) to reach the summit of Mount Everest in 1953. Like his father, Hilary was also a professional bee keeper.



Who's Who?

Characters B and G



They are actually the same person!

Jonah Lomu was a world-famous New Zealand rugby union player who finished his international career with 63 caps and having scored 37 tries. In his later life, Lomu became a member of The Church of Jesus Christ of Latter-day Saints.

Who's Who?

Characters C and H

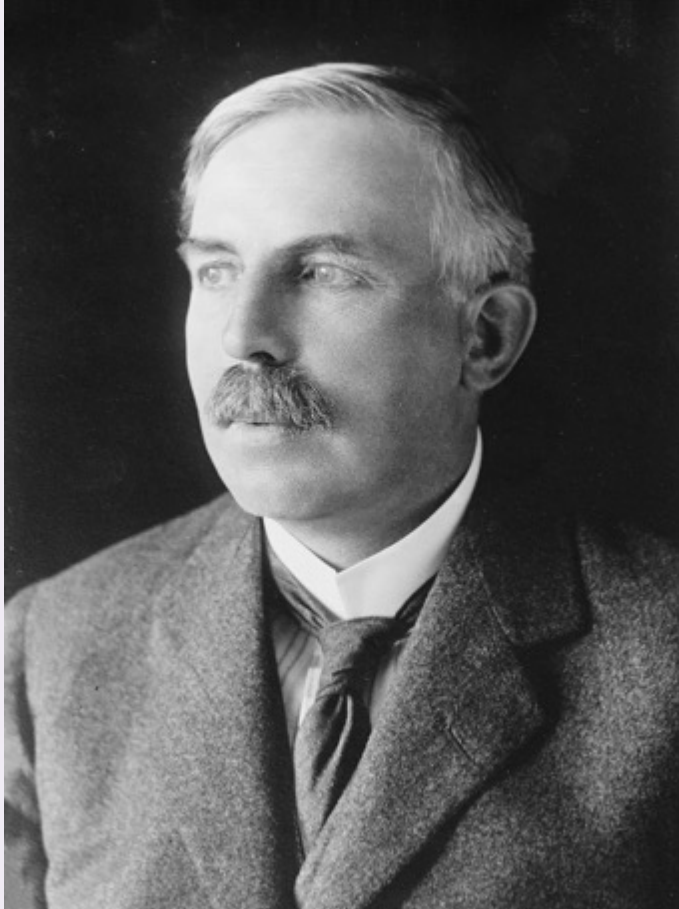
They are actually the same person!

Sophie Pascoe became an amputee at the age of three as a result of a horrific accident with a ride-on lawnmower. As a swimmer, she has taken part in three Paralympics and has won nine gold medals and six silver medals making her New Zealand's most successful Paralympian.



Who's Who?

Characters D and I



They are actually the same person!

Ernest Rutherford came from very humble beginnings as the son of a farmer and school teacher. However, Rutherford was to become a pioneer in the world of nuclear physics and was the first person to split the atom.

Who's Who?

Characters E and J

They are actually the same person!

Dame Kiri Te Kanawa, an international soprano opera singer, was given up for adoption at just a few weeks old. Despite facing people's prejudices due to her mixed heritage parentage, Kanawa has achieved huge success around the world and has honorary degrees from many universities.



Photo courtesy of discoveringability (@flickr.com) - granted under creative commons licence – attribution

Challenging Stereotypes

We should never judge a person or a group just because of the way they look, their gender, the job they have, their age or their likes and dislikes.



Ideas that people have about others are not always correct.

Well done for finishing your second week of home learning!

You are doing so well and we are really proud of everything that you have achieved, keep it up 😊

Have a lovely weekend! If you can, try to get some fresh air and some exercise.