

Thursday 4<sup>th</sup> March 2021

Today you will be thinking about the things you see around you. These are called **human and physical features**

Send your work to me on this email  
[jclarke@kingsavenue.lambeth.sch.uk](mailto:jclarke@kingsavenue.lambeth.sch.uk)

LO: To identify the human and physical features of a country.

**In Geography things around us can be divided  
in to**

**HUMAN FEATURES and PHYSICAL FEATURES**

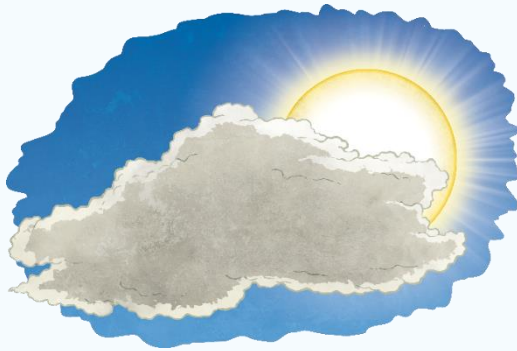
# **HUMAN FEATURES** and are things that have been made by people.

There are a lot of human features around us. Here are some human features in London: Tower Bridge, The London Eye, Brixton station, roads and buses and even post boxes.



**PHYSICAL FEATURES** and are things that happen naturally.

Some examples are rivers, beaches hills and mountains and even the weather.



**Draw some human and physical features of the local area.**

Human features	Physical features
	