

Winter to Spring



twinkl

Remember the 4 seasons

Autumn

September

October

November

Winter

December

January

February

Spring

March

April

May

Summer

June

July

August

Today we will be learning about the changes as we leave winter and move into spring.

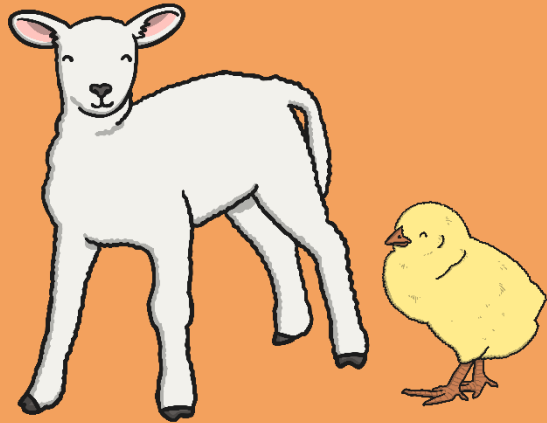
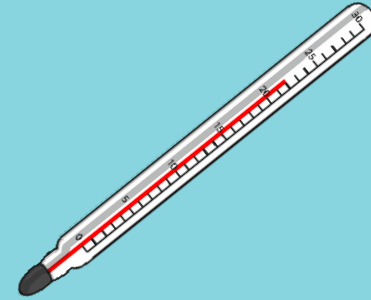
Watch the video clip to see some of the changes.

<https://www.bbc.co.uk/teach/class-clips-video/the-changing-seasons/zh4rkmn>

Spring Changes

As the seasons change from winter to spring the temperature begins to rise, which means it gets even warmer.

Leaves begin to appear on trees and some begin to blossom.



Plants start to grow again and many flowers start to come out.

A lot of new life is around as lambs are born and chicks begin to hatch.

As winter turns to spring the days get longer and the nights get shorter.

Spring Changes

What changes have you noticed between winter and spring?

What have you been wearing?

What has happened to the trees?

What has happened to the length of the days?



Compare this with winter. **What are the main differences?**

**Look out your window what signs of spring
can you see? Draw 4**

