

Well done for getting this far! Stay positive and keep going :)

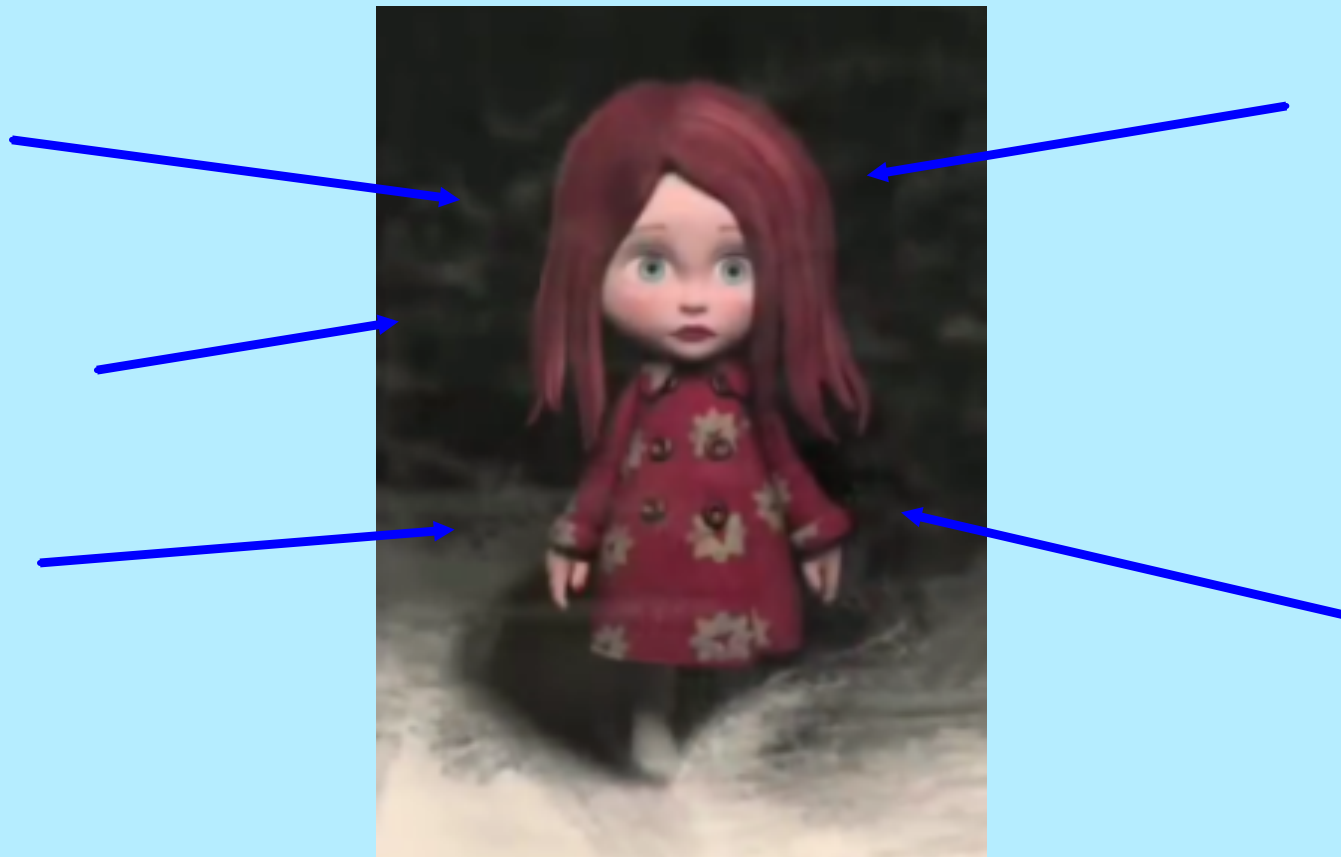
Wednesday 13th January 2021

L.O: To describe a character to convey atmosphere

- To include powerful expanded noun phrases
- To use cohesive devices
- To be selective with my language to convey atmosphere

<https://www.literacyshed.com/alma.html> Watch Alma again!

What can we identify about the this character?



## What can we identify about this character?

Glossy, scarlet  
hair

buttoned, floral  
coat

snow boots/wellies?



olive-like eyes

ruby-red lips

What do you think this character's personality is like?

What actions will show off her personality?

How might the story be different with this character compared to Alma?

How will she fall into the same trap?

Where was she going?

How will she be feeling?

How will she move?

What will she be thinking?

How will she react?



*For example, the girl is smartly dressed so maybe she was on her way to a party!*

**Therefore:**

**Maybe she is feeling excited...**

**Maybe she is walking with a spring in her step...**

# Constructing an Expanded Noun Phrase

A noun is a thing, person or idea. An expanded noun phrase provides extra information about the noun. You can use a determiner, adjectives and a prepositional phrase within your expanded noun phrase to describe and specify details about the noun.

Determiner	Adjectives	Noun	Prepositional Phrase
<p>A determiner is a word which comes before a noun or any modifiers, such as adjectives. They introduce the noun and give the reader important information about it.</p> <p><b>the</b> <b>a</b> <b>an</b> <b>my</b> <b>these</b> <b>her</b></p>	<p>Adjectives are words which describe a noun. You can use two adjectives to describe a noun but they must be separated by a comma, e.g. the huge, hairy spider.</p> <p><b>colourful</b> <b>gigantic</b> <b>miniature</b> <b>pristine</b> <b>dilapidated</b> <b>ancient</b></p>	<p>The noun is the thing, person or idea that the expanded noun phrase is about.</p> <p><b>socks</b> <b>bus</b> <b>engine</b> <b>bottle</b> <b>television</b> <b>pond</b> <b>custard</b> <b>paper</b></p>	<p>A preposition is a word which indicates place or direction. A prepositional phrase usually includes a preposition and a noun or a pronoun.</p> <p><b>beside the river</b> <b>near the town</b> <b>in the water</b> <b>during the night</b> <b>through the winter</b> <b>this evening</b> <b>on the table</b></p>

For our character:

Her pristine socks pulled high up her ankles.

A colourful coat wrapped around her body.

What impression of the character do these noun phrases give?

What atmosphere is created?

Today and tomorrow we will be rewriting the story but with our alternative character!

Today: See the next slides to help!

Paragraph 1 - Introduce new character/description

Paragraph 2 - New character walks down the street

Paragraph 3 - New character looks around the shop

How will it be different with your new character?

To create atmosphere:

Powerful adjectives/adverbs

In depth description

Variation in sentence length

Expanded noun phrases

Onomatopoeia

## Constructing an Expanded Noun Phrase

A noun is a thing, person or idea. An expanded noun phrase provides extra information about the noun. You can use a determiner, adjectives and a prepositional phrase within your expanded noun phrase to describe and specify details about the noun.

Determiner

Adjectives

Noun

Prepositional Phrase

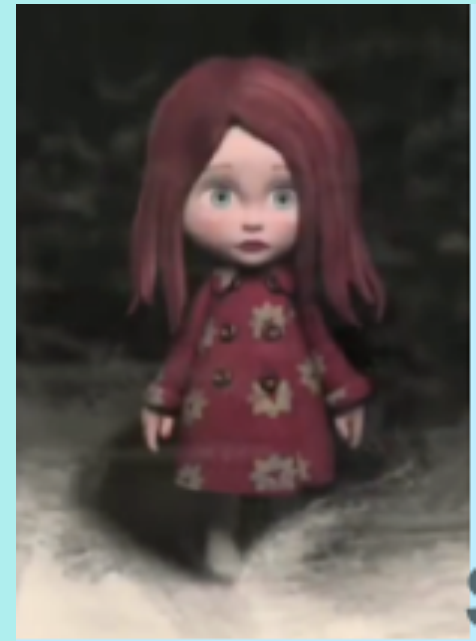
## Paragraph 1: Character Description

What would our character be like as a person?  
The young girl seems \_\_\_\_\_ and \_\_\_\_\_.

What would she look like?  
Her hair is \_\_\_\_\_.  
With her eyes wide open, the doll looks \_\_\_\_\_.

What would she be wearing?  
The doll is wearing \_\_\_\_\_.  
With \_\_\_\_\_, the girl looks like \_\_\_\_\_.

What is her personality?  
The young girl feels \_\_\_\_\_. Although, she is also \_\_\_\_\_.



Read through this model to help give you ideas for paragraphs 2 and 3:

Confidently strolling through the doorway, Cynthia felt her curiosity grow and grow. The sky had been darkening overhead and the young, inquisitive girl had decided to nip into the closest shop to avoid the rain shower - what a shop it was! There were rows upon rows of gleaming, golden treasures on the shelves with sparking, pristine dolls peeking out from behind.



**Great job!**

Make sure to send your work to your class teacher:

Miss James: [mjames@kingsavenue.lambeth.sch.uk](mailto:mjames@kingsavenue.lambeth.sch.uk)

Miss Sutherland: [ksutherland@kingsavenue.lambeth.sch.uk](mailto:ksutherland@kingsavenue.lambeth.sch.uk)